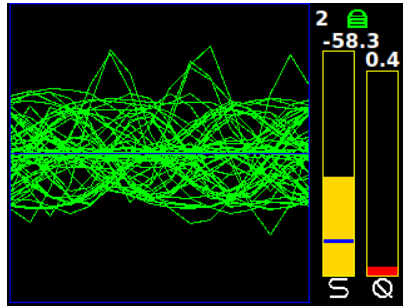


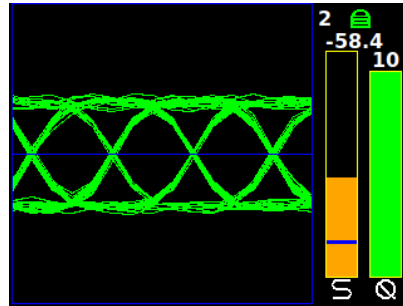


ADAPTIVE EQUALIZER MODE FOR RDMS™ TELEMETRY RECEIVERS

WITHOUT
Adaptive
Equalizer



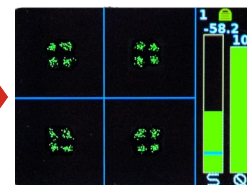
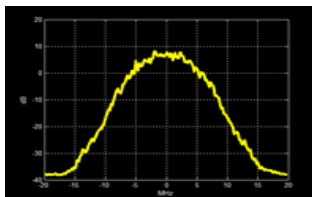
WITH
Adaptive
Equalizer



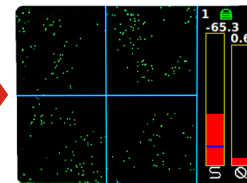
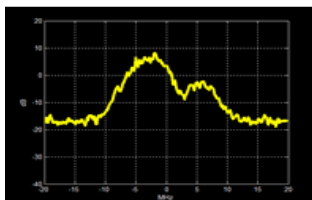
Improves Reception in Multipath Channels

- Adaptive Equalizer combats Multipath Fading with Digital Signal Processing
- NEW! Uses decision-directed feedback to tackle harsh channels and provide cleaner results
- Available in Tier 0 (PCM/FM), Tier 1 (SOQPSK-TG), Tier 2 (ARTM CPM/Multi-h CPM), BPSK, QPSK, OQPSK, DPM, and SOQPSK/LDPC modes of operation
- Works with your existing transmitter, no matter what brand it is
- Available in any new Quasonix RDMS™ Telemetry Receiver

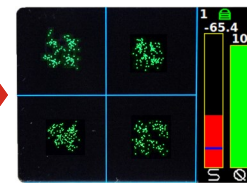
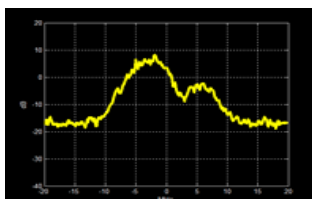
Available as a programming upgrade to most Quasonix RDMS™ Telemetry Receivers



Without
Multipath

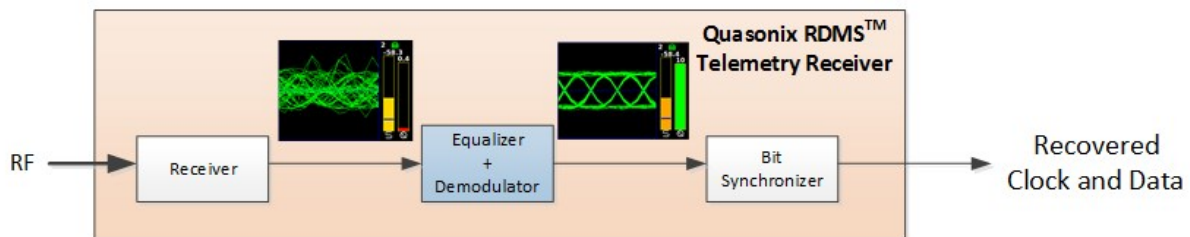
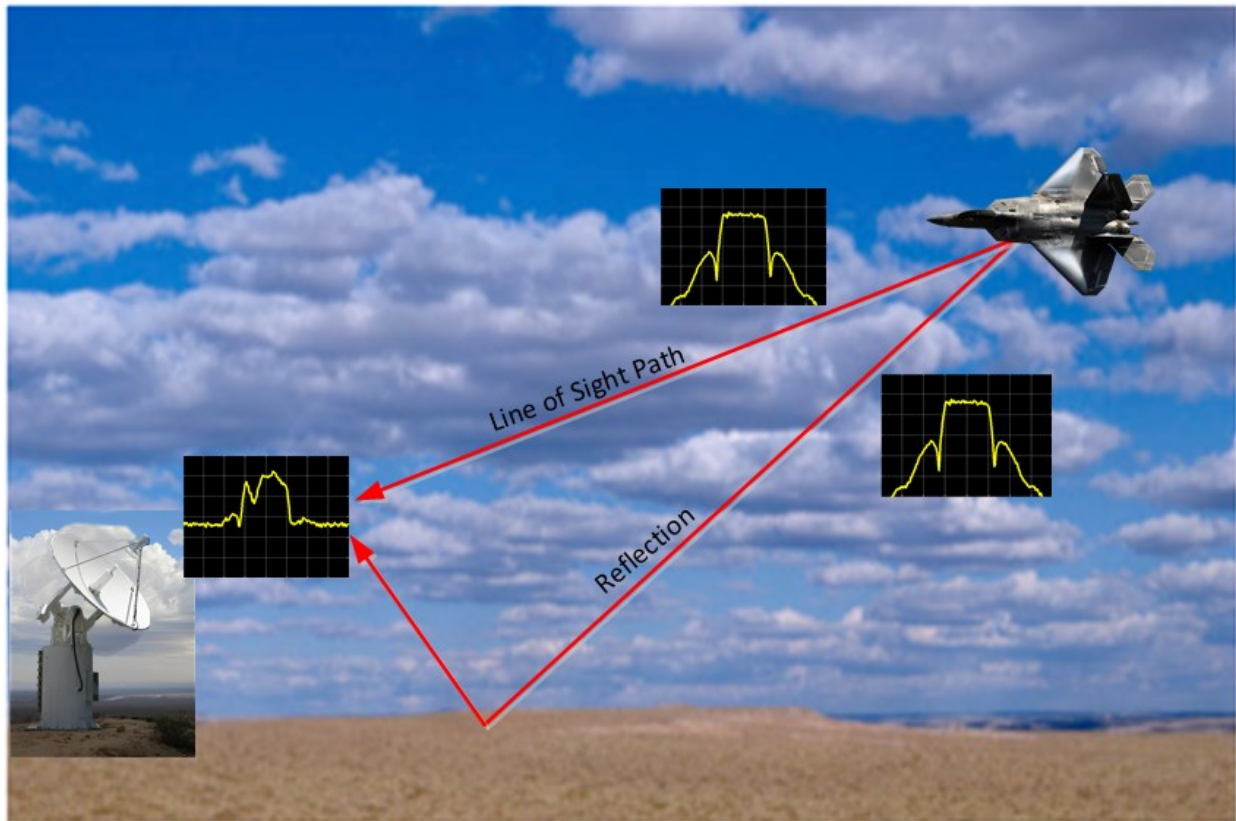


With
Multipath



With
Multipath
AND
Adaptive
Equalizer

RDMS™ With Adaptive
Equalizer Option



Problem: Signal Distortion due to Multipath Fading

- Reflections can add or subtract to create multipath fading
- Cannot be solved with more power

Solution: Reduce Distortion with Adaptive Equalizer

Advantages of the Quasonix Adaptive Equalizer Solution:

- **Reduces effects of Multipath Fading**
 - Improves overall link availability
- **Receiver Configuration**
 - Compatible with standard telemetry applications and installations
 - No training sequences are required

Available as a programming upgrade to most Quasonix RDMS™ Telemetry Receivers